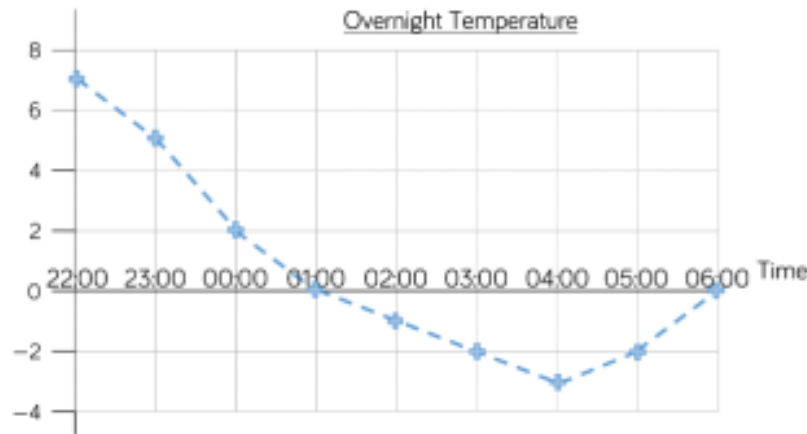


Overnight Temperature



What was the highest/lowest temperature?

What time did they occur?

What is the difference between the highest and lowest temperature?

How long did the temperature stay at freezing point or less?

Heart Rate During Exercise



How long did it take for the pulse rate to reach the highest level? Explain your answer, using the graph to help.

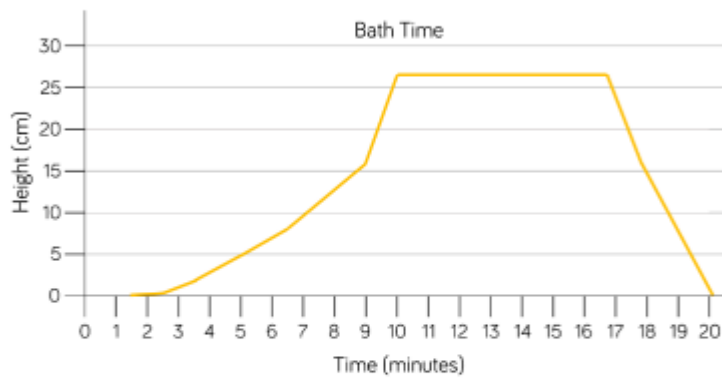
What could have happened at 5 minutes?

What could have happened at 7 minutes?

Estimate what the pulse rate was after 2 and a half minutes. How did you get an accurate estimate?

Challenge:

Here is a line graph showing a bath time.
Can you write a story to explain what is
happening in the graph?



How long did it take to fill the bath?

How long did it take to empty?

The bath doesn't fill at a constant rate.

Why might that be?